

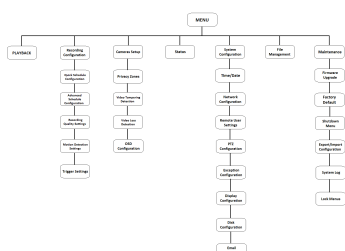
Quick Start Guide

DS-7300HI-S Series DVR



Menu Structure

The menu structure of the DS-7300HI-S Series DVR is as followed:



Startup and Shutdown

Proper startup and shutdown procedures are crucial to expanding the life of your DVR.

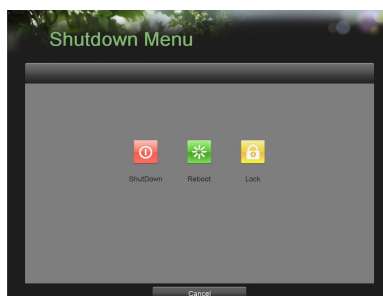
To startup your DVR:

1. Plug power adapter into DVR and electrical outlet. It is **HIGHLY** recommended to use a surge protector. The Power indicator LED on the front panel will turn red.
2. Connect a VGA monitor and mouse into the DVR.
3. Switch the POWER button on the back rear panel. The Power indicator LED will turn blue. The unit will begin to start.

There are two proper ways to shutdown the DVR. To shutdown the DVR:

• OPTION 1: Standard Shutdown

1. Enter the Shutdown menu by going to Menu > Maintenance > Shutdown.



2. Select the Shutdown button.

3. Click the Yes button.

4. Turn off switch on rear panel

• OPTION 2: Manual Shutdown

1. Press and hold the POWER button for 3 seconds.
2. Enter the administrator's username and password in the dialog box for authentication.
3. Click the Yes button.
4. Turn off switch on rear panel

Note: Do not press the POWER button again when the system is shutting down.

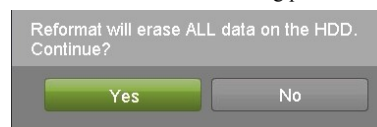
Formatting a Disk

A newly installed hard disk drive (HDD) must be formatted first before it can be used with your DVR.

Note: Formatting the disk will erase all data on it.

To format a new disk:

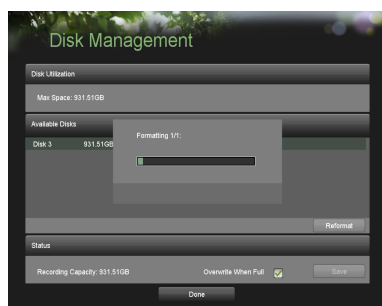
1. Enter the Disk Management menu by going to Main Menu > System Configuration > Disk Management.
2. Select a disk to format. A disk that has not been formatted will show Error Detected as its status. If the disk is one that is newly installed, the status of the drive will show up as Non-Active and the Reformat button will change to the Add button.
3. Click the Add button.
4. A confirmation message will appear on the screen. Click the Yes button to continue formatting process.



5. A format progress bar will be shown on the menu. After the disk has been formatted, the status of the disk will change to Active.

Quick Start Guide

DS-7300HI-S Series DVR



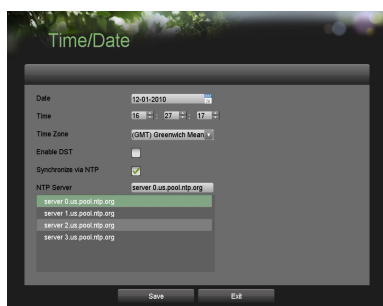
6. Click the Done button to exit out of Disk Management.

Setting Date & Time

It is extremely important to setup the system date and time to accurately timestamp recordings and events.

To setup date and time:

1. Enter the Time/Date menu by going to Main Menu> System Configuration > Time/Date.
2. Enter the correct date and time.



3. Click the Save button to save the setting.

Recording

To setup quick recording schedule:

1. Enter the Quick Schedule Configuration menu by going to Main Menu > Recording Configuration> Quick Schedule Configuration.



2. Select the camera to configure from the camera drop down menu. If all the cameras are to be configured with the same settings, select All Cameras from the list.
3. Check the Enable checkbox to enable the recording schedule. If the checkbox is unchecked, the recording schedule will be disabled.
4. Check the 24/7 checkbox if you would like to record continuously or on event for 24 hours a day, 7 days a week. If you wish to schedule different time frames for Monday through Sunday, leave the 24/7 checkbox unchecked and skip to step 6.
5. Select Recording Type for 24/7 recording and move on to step 8. Recording type includes Continuous for continuous recording or On Event for recording when an event is triggered (i.e. from detected motion).
6. Select the start and stop time for each day of the week. The start and stop time are listed using a 24 hr cycle (i.e. 18:00 is equivalent to 6:00pm).
7. Select Recording Type for each day of the week. Recording type includes Continuous for continuous recording or On Event for recording when an event is triggered (i.e. from detected motion) for the selected time period.
8. Check the Enable Audio checkbox if you would like to enable audio recording along with the video. Audio can only be recorded if an amplified audio source is connected to the DVR.
9. Select the Save button to save the schedule settings and select Exit to return to the previous menu. Selecting the Exit button without clicking Save will quit out of the

Quick Start Guide

DS-7300HI-S Series DVR

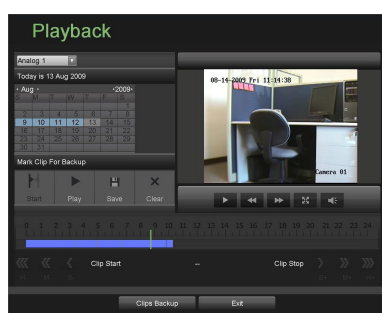
menu without saving settings.


Note: On Event recordings are recordings that are triggered from motion detection and/or from an external alarm. See *Configuring Alarms and Exceptions* in the user manual.

Playback

Playback from Search

1. Enter the Playback menu by going to Main Menu > Playback.

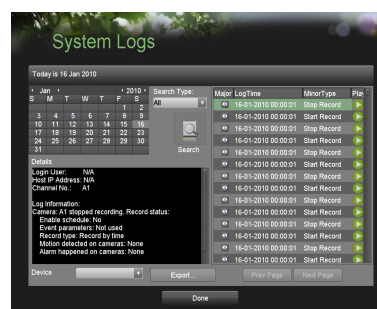


2. Set the search parameters by selecting cameras to search and date to search on.
3. The search results will be shown on the timeline with blue bars designating recorded files.
4. Select file and click the Play button to begin playback.
5. Click  button to enter full screen mode.

Note: In full screen mode, you can select multiple channel playback.

Playback from System Log

1. Enter the System Logs menu by going to Main Menu > Maintenance > System Logs.



2. Select date from the Calendar to search for system logs in.
3. Select Search Type.
4. Click the Search button.
5. A list of results with your search criteria will be displayed. If applicable, select the video log to playback and click Play.
6. The recording will begin to play in the Playback interface.

Backup

Recorded files can be backed up to various devices, such as USB flash drives, USB HDDs or a DVD writer.

To export recorded files:

1. Enter the File Management menu by going to Main Menu > System Configuration > File Management



2. Select desired parameters to search for files to backup.
3. Select the files to backup. You may also click the Play button to verify that these files are indeed the ones you would like to backup. The total size of the files will also be shown on this menu.
4. Click the Files Backup button to access the Files

Quick Start Guide

DS-7300HI-S Series DVR



Backup Menu.



5. Select device to backup to from drop-down list (USB Flash Drive, USB HDD, DVD Writer). If backup device is not recognized:

- Click the Refresh button.
- Reconnect device.
- Check for compatibility from vendor.

6. The total available free space will be shown. If the free space is not sufficient, delete files from the storage device or insert a device with more available free space.
7. Click the Backup button to begin backup process. After the backup has completed, click the OK button.



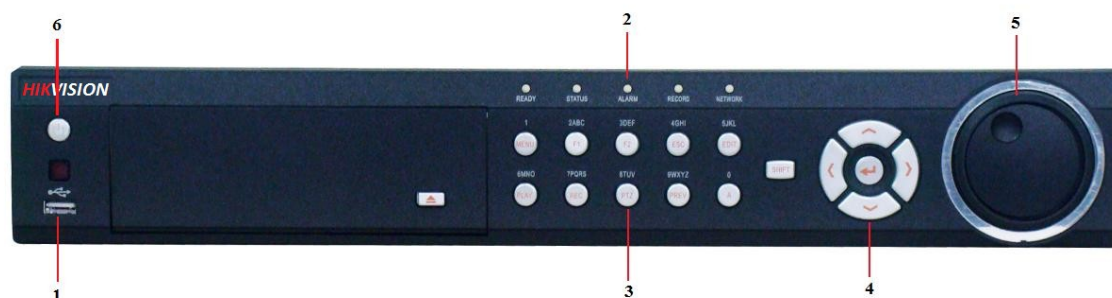
Note: Video Player software will automatically be copied on to the device that the recorded files were exported on.

Quick Start Guide

DS-7300HI-S Series DVR

HIKVISION

Using the Front Panel Controls



The controls on the front panel include:

1. **USB Ports:** Universal Serial Bus (USB) ports for additional devices such as USB mouse and USB Hard Disk Drive (HDD).
2. **Status Indicators:** Status indicators for different features of the DVR.
 - **Alarm:** Alarm indicator turns red when a sensor alarm is detected.
 - **Ready:** Ready indicator turns green when DVR is functioning properly.
 - **Status:** Status indicator turns green when DVR is controlled by an IR remote.
 - **HDD:** HDD indicator blinks red when data is being read from or written to HDD.
 - **Tx/Rx:** Tx/Rx indicator blinks blue when network connection is functioning properly.
3. **Control Buttons:**
 - **MENU/WIPER Button:** Pressing the MENU/WIPER button will return the user to the Main menu (after successful login). Pressing and holding the button for 5 seconds will turn off audible key beep. In PTZ Control mode, the MENU/WIPER button will start wiper (if applicable). In Playback mode, it also can be used to enable/disable side bar menu.
 - **F1/LIGHT:** In PTZ Control mode, it will turn on/off PTZ light. In PTZ Control mode, the F1/LIGHT button is used to zoom the PTZ camera in when in the PTZ Control menu.
 - **F2/AUX:** It is used to cycle through tab pages. In PTZ Control mode, the F2/AUX button is used to zoom the PTZ camera out when in the PTZ Control menu.
 - **ESC:** The ESC button is used to escape to the previous menu and to arm/disarm the DVR in Preview mode.
 - **EDIT/IRIS+:** The EDIT/IRIS+ button is used to edit text fields. When editing text fields, it will also function as a Backspace button to delete the character in front of the cursor. On

Quick Start Guide



DS-7300HI-S Series DVR

checkbox fields, pressing the EDIT/IRIS+ button will tick the checkbox. In PTZ Control mode, the EDIT/IRIS+ button opens up the iris of the camera.

- **PLAY/AUTO:** The PLAY/AUTO button is used to enter the Playback menu. It is also used to turn audio on/off in the Playback menu and auto scan in the PTZ Control menu.
- **REC/SHOT:** The REC/SHOT button is used to enter the Quick Schedule Configuration interface. If used when controlling a PTZ, pressing the REC/SHOT button and then a Numeric button will call a PTZ preset.
- **PTZ/IRIS-:** The PTZ/IRIS- button is used to enter the PTZ Control mode. When in the PTZ Control mode, it is used to close the iris of the PTZ. In Playback mode, it also can be used to enable/disable audio.
- **PREV/FOCUS-:** The PREV/FOCUS- button is used to switch between single screen and multi-screen mode. In PTZ Control mode, it is used to adjust the focus in conjunction with the A/FOCUS+ button.
- **A/FOCUS+:** The A/FOCUS+ button is used to adjust focus in the PTZ Control menu. It is also used to switch between input methods (upper and lowercase alphabet, symbols and numeric input).
- **SHIFT:** The SHIFT button is used for switch button action between numeric button and control button.

4. DIRECTION/ENTER Buttons:

- **DIRECTION Buttons:** The DIRECTION buttons are used to navigate between different fields and items in menus. In Playback mode, the Up and Down button is used to speed up and slow down recorded video. In Preview mode, these buttons can be used to cycle through channels.
- **ENTER Button:** The ENTER button is used to confirm selection in any of the menu modes. It can also be used to *tick* checkbox fields. In Playback mode, it can be used to play or pause the video.

5. JOG SHUTTLE Control:

The JOG SHUTTLE control can be used to move the active selection in a menu. In the Playback mode, the inner ring can be used to speed up/slow down the video. In Preview mode, it can be used to cycle through different channels.

6. POWER Button:

The POWER button is used for power on or power off the DVR.

Note: It is important to note that you must click the EDIT button on either the remote or front panel on a text field before you're able to edit its content. After you're done entering text, you must hit the ENTER button to be able to move on to the next field.